



Web 2.0 Navigation: Web 2.0 Button with Navigation Arrow

GIMP® is all about IT (Images and Text)

WEB 2.0 NAVIGATION: BUTTONS_WITH_NAVIGATION_ARROW

This button navigation will be designed using three images and will be displayed using html and css:

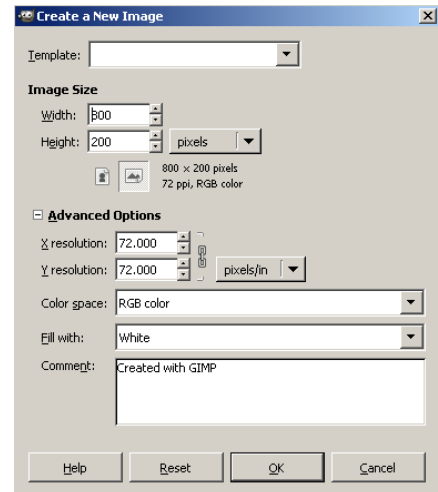
- **The background image**
- **The hover button**
- **The navigation arrow**

Although the image you will create will be a complete background image, the saved image will only be one pixel wide and the desired height.



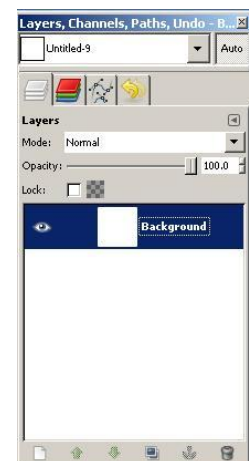
OPEN GIMP®


Step 1: To begin a new GIMP® project, from the Menu Bar, select File | New. At the Create a New Image dialog box, select a size and background color for your new image. I selected 800 x 200 pixels with a white background.



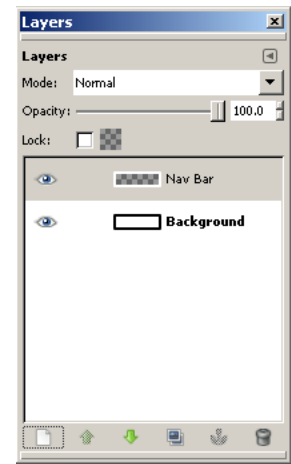
You will need to click the + sign beside Advanced Options to expand the menu. Click the Fill with: down arrow and select white. Click the OK button.


A new canvas displays in the GIMP document window, information about the new image displays in the Title Bar, and a layer named “Background” displays in the Layers palette.




Step 2: At the bottom of the Layers palette, click the Create New Layer and add to image icon  and at the New Layer dialog box, name the layer Nav Bar. Click the OK button.

A new layer displays above the "Background" layer in the Layers palette.

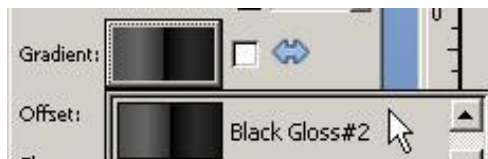


Step 3: From the Toolbox, select the Rectangle Select Tool . Move the cursor on the image canvas and draw a rectangle 800 x 60 pixels.

Notice that the pixel dimensions display below the image canvas. (The height is important, but the width is just to visualize the bar).

Step 4: From the Toolbox, select the Blend tool  and in the Blend options and click the Gradient tool and select Web 2.0 Black

Gloss #2



Step 5: Drag from the bottom horizontal center of the rectangle to the top horizontal center of the rectangle to create a gradient fill.




Note: Since the bar is 800 pixels wide, the horizontal center would be 400 on the horizontal ruler.

Step 6: Create a new folder inside the `buttons\images` folder named `menu_1_orange`. Inside the `menu_1_orange` folder create a subfolder named `images`.

In the images folder, save the image as btn_background with a .xcf extension.

Step 7: Click the Zoom down arrow at the bottom of the image canvas and select 400%. If you zoom in, it will be easier to crop the image to 1 pixel x 60 pixels.

Step 8: From the Toolbox, select the Crop Tool . Move the cursor onto the image and draw a rectangle 1 pixel wide and 60 pixels high. Move the cursor inside the crop area until it turns to a four-pointed arrow. Click to accept the crop.



Step 9: Click the Zoom drop-down arrow and select 100%.



This 1 pixel x 60 pixel image will be repeated using CSS as many times as necessary to display the background navigation bar.

Step 10: Save the graphic in the

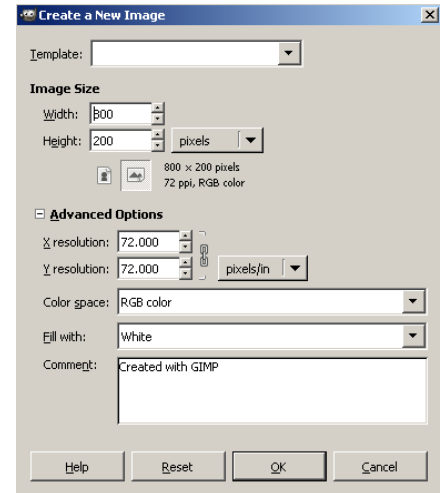
buttons\images\menu_1_orange_images\ folder as btn_background.png.

Step 11: From the Menu Bar, select File | Close to close the current project.

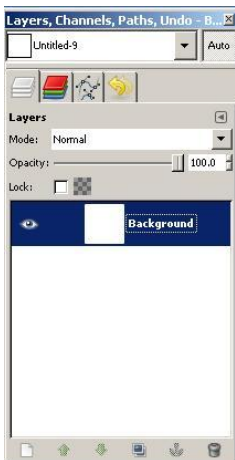
HOVER BUTTON

Step 1: To begin a new GIMP® project, from the Menu Bar, select File | New. At the Create a New Image dialog box, select a size and background color for your new image. I selected 800 x 200 with a white background.


You will need to click the + sign beside Advanced Options to expand the menu. Click the Fill with: down arrow and select white.




Click the OK button.




A new canvas displays in the GIMP document window, information about the new image displays in the Title Bar, and a layer named "Background" displays in the Layers palette.

Step 2: At the bottom of the Layers palette, click the Create New Layer and add to image icon  and at the New Layer dialog box, name the layer Hover Button. Click the OK button.

A new layer displays above the “Background” layer in the Layers palette.


Step 3: With the “Hover Button” layer selected in the Layers palette, click the Rectangle Select Tool  and draw a rectangle 60 pixels wide and 60 pixels high (the height is important, but the width is just to visualize a button).

Step 4: From the Menu bar, select the Blend Tool . From the Blend options, click the Gradient icon and select Web 2.0 Fire



Step 5: Drag from the bottom of the selected Rectangle to the top to create the gradient effect.




Step 6: Click the Zoom down arrow at the bottom of the image canvas and select 400%. From the Toolbox, click the Crop Tool  in the Toolbox and draw a rectangle 1 pixel x 60 pixels and click in the selection to accept the crop.



Step 7: Click the Zoom arrow down arrow and select 800%. To color the top three pixels and the bottom pixel

a dark gray, from the Toolbox, change the FG color to dark gray (373735).

Step 8: From the Toolbox, select the Paintbrush Tool . From the Paintbrush options, select the smallest brush size (1).

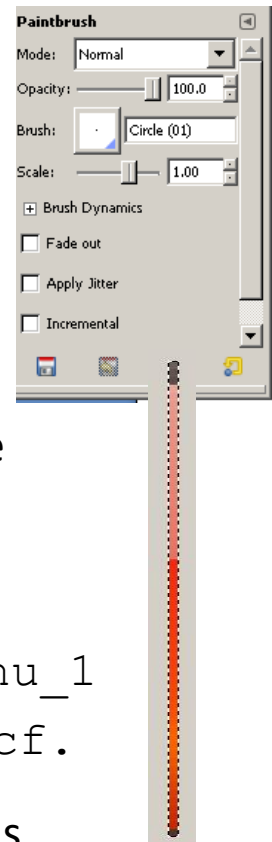
Step 9. Click the top three pixels and the last pixel to change them to dark gray.

Step 10: Click the Zoom down arrow and change the magnification to 100%.

Step 11: Save the image in the PortableApps\GIMP\buttons\images\menu_1_orange\images folder as hover_button.xcf.

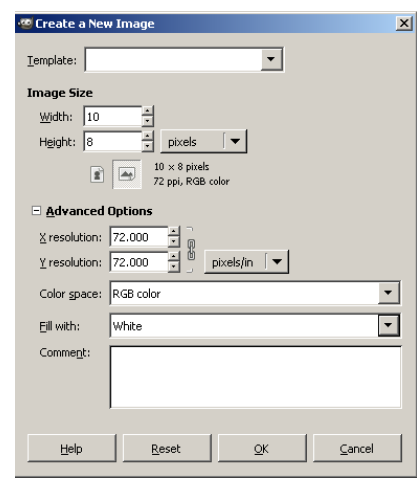
Step 12: Save the image in the images folder again as hover_button_orange.png.

Step 13: From the Menu Bar, select File | Close to close the current project.



NAVIGATION ARROW

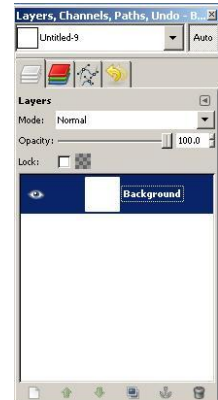
Step 1: To begin a new GIMP® project, from the Menu Bar, select File | New. At



the Create a New Image dialog box, select a size and background color for your new image. I selected 9 x 8 pixels with a white background.

You will need to click the + sign beside Advanced Options to expand the menu. Click the Fill with: down arrow and select white. Click the OK button.

A new canvas displays in the GIMP document window, information about the new image displays in the Title Bar, and a layer named "Background" displays in the Layers palette.




Step 2: At the bottom of the Layers palette, click the Create New Layer and add to image icon  and at the Create New Layer dialog box, name the layer Nav Arrow. Click the OK button.

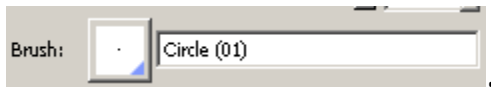
A new layer displays above the "Background" layer in the Layers palette.

Step 3: In the Toolbox, change the FG color to eb8473 and from the Menu bar select Edit | Fill with FG Color.

Step 4: Click the Zoom down arrow below the image canvas and select 800%.

Step 5: In the Toolbox, change the FG color to black.

Step 6: In the Toolbox, click the Paintbrush Tool  and in the Paintbrush options, select the smallest Brush size (Circle 01)



Step 7: Click on the canvas and select 9 pixels across the top three rows. The colors will alternate with black, orange, and shades of black. You can click the pixels additional times to darken the arrow.

- Row 1- 3 9 pixels
- Row 4 7 center pixels
- Row 5 5 center pixels
- Row 6 3 center pixels
- Row 7 1 center pixel
- Row 8 Nothing

Step 8: Change the Zoom level to 400% to view the arrow at a slightly smaller size.



Step 9: Save the image in the

PortableApps\GIMP\images\menu_1_oranges_images\ folder as nav_arrow_orange.xcf.

Step 10: Save the image again in the same folder as

nav_arrow_orange.png.

Note: If you prefer, you could also create the arrow using the Paths Tool and filling with selection with a black fill color.

WEB 2.0 NAVIGATION: BUTTONS_MENU_1 (COLOR)

Create additional images in various gradient web 2.0 colors that can be used in future Web development projects.